

(The Tannery)

# L'Adoberia

## The Historical Interpretation Centre of medieval Granollers

Is a unique space for discovering the history of the medieval city of Granollers from: a significant stretch of the wall that surrounded the city, the remains of two of more than twelve towers that defended it and the remains of the old Ginebreda tannery, the only surviving one in Granollers.

The archaeological collection is the core of the historical interpretation centre. It is an ideal place to get to know and spread the growth and transformation of the city of Granollers, from its medieval origins until modern times, characterized by a large walled area, all sorts of trades and productive activities, the most significant being those related to leather work and a strong diversified market.

**The Tannery. The Historical Interpretation Centre of medieval Granollers** is a graphic museum linked to the Granollers Museum, which opened at the end of 2009 and was awarded the Special Bonaplata Heritage Prize, "Premi Especial Bonaplata de Patrimoni", in the year 2010.

It now belongs to the **Catalan Network of Historical Tanneries** which is made up of the Cal Granotes Tannery at the Igualada and Anoia Region Leather Museum, the Molí del Codina Tannery in Tàrrrega, the Art of Leather Museum in Vic, the Tanneries in Lleida and the Tannery in Granollers. Places of heritage that allow for a thorough and extensive interpretation of the work of the tanneries in Catalonia from the pre-industrial age to contemporary times.



The entrance to the tannery in the Church Square.



### Museu de Granollers L'Adoberia

Plaça de l'Església, 7  
08401 Granollers

#### HOW TO GET THERE. BY CAR

**From Barcelona:** AP 7 Motorway and C17  
**From Girona:** AP 7 Motorway and C35

#### BY TRAIN

**From Barcelona:** Rodalies line R2  
(Local train) Granollers Centre Station  
**From Girona:** Regional Train on  
Portbou-Girona-Barcelona line.  
Granollers Centre Station  
**Barcelona-Vic-Puigcerdà:** Rodalies line R3.  
Granollers-Canovelles Station

#### THE TANNERY (L'Adoberia)

Plaça de l'Església, 7 (the Church square)  
Granollers

#### OPENING HOURS:

April - October  
Saturdays from 18 to 21.  
Sundays from 12 to 14.  
November - March  
Saturdays from 18:30 to 21:30.  
Sundays from 12 to 14.

#### SERVICES (pre-booking required)

Guided tours and routes  
Tours for organised groups.  
Educational tours for education centres.

#### INFORMATION AND BOOKINGS

Granollers Museum  
Carrer Anselm Clavé, 40. Granollers  
Tel: 93 842 68 40  
museu@ajuntament.granollers.cat  
[www.museugranollers.cat](http://www.museugranollers.cat)



Ajuntament  
Granollers

In collaboration with:



Generalitat de Catalunya  
Departament de Cultura



Diputació  
Barcelona

In agreement with:



Xarxa d'adoberies  
històriques de Catalunya  
La pell de Catalunya

Museu de Granollers  
L'Adoberia

# L'Adoberia

## The Historical Interpretation Centre of medieval Granollers

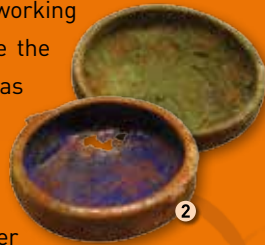
# L'Adoberia

1



The **Ginebreda Tannery** has become the only surviving one out of the half a dozen tanneries that have been historically recorded and documented in Granollers.

It was discovered in 2005, while the GRA youth club was being built, uncovering a significant pre-industrial development of medieval origin which was working **from the 16<sup>th</sup> to 19<sup>th</sup> Century** and where the complete leather treatment process was carried out from the whitening, liming and tanning to the drying and dyeing.



2

Nowadays we can visit and see the lower part of the former tannery, known as "ribera", where a well, the remains of a stove and the characteristic round pits which were used for soaking, and the whitening and tanning of the leather can all be identified. It is currently one of the few examples of industrial archaeology which has been dug up in the city of Granollers and one of the best preserved tanneries in Catalonia.

## The Historical Interpretation Centre of medieval Granollers

The **Historical Interpretation Centre** also proposes immersion into medieval Granollers to discover the social, economic and urban development realities of the city and its business importance. Through different narratives and graphic museum resources – objects, pictures, documents and audio visual media – you can retrace the history of the city: from its origins around the Church of Sant Esteve in the 10<sup>th</sup> Century, then the building of the city walls in the 14<sup>th</sup> Century and the organization of the traders' squares; the expansion and growth of the city throughout

the 16<sup>th</sup> Century, whose main exponent would be the "Porxada", a former grain market which has now been declared a Cultural Item of National Interest, to the latest times of the city walls, at the beginning of the 19<sup>th</sup> Century when the city incorporated budding industry to its trading tradition.

It is, therefore, a place to show the importance of Granollers as a town built around the crossroads of the former road network which brought about, at least since the 10<sup>th</sup> Century an important market based on agriculture, livestock and

craftsmen, some of whom were related to leather treatment. A series of factors acted as the driving force behind a trade which, even today, is expressed and projected at its best at the Thursday market.

3



4

- 1 The Granollers coat of arms. On loan by "la Mútua".
- 2 Pigmented bowls found at the tannery.
- 3 A "picoti" of grain (approx. 1,5 Kgs-4 pounds). The official measurement in Granollers.
- 4 Peeling knife or fleshing iron.
- 5 Hypothetical reconstruction of the tannery and the city wall.
- 6 The archaeological remains.

Photos: **Pere Cornellas**



5



6